

THE STAR AND GARTER

RICHMOND HILL

APARTMENTS

CREATED BY

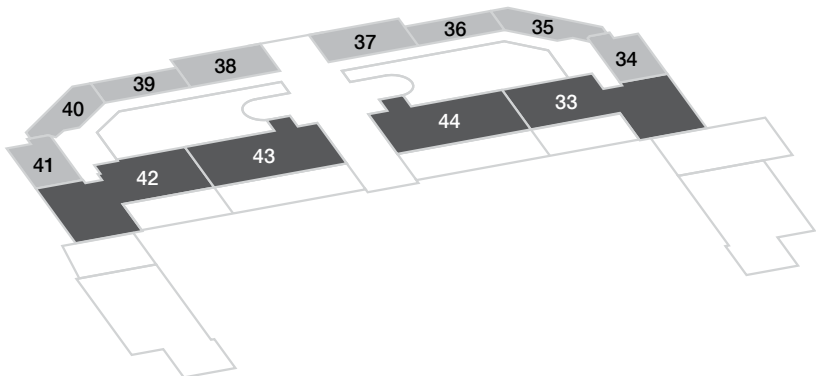


The site plan illustrates the layout of The Star and Garter. The main building, a large red structure, is centrally located. To its north is the Main Entrance, marked by a white arrow. To the east is the Richmond Park Entrance, also marked by a white arrow. The building is surrounded by green spaces, including a large central lawn with three circular features. To the south of the building is a Chapel, marked with a red arrow. A path leads from the Chapel to an underground car park, marked with a white arrow. The plan also shows Richmond Hill Road to the north and Star and Garter Hill to the east. The surrounding area is filled with green trees and grass. The title 'The Star and Garter' is written in a large, stylized font at the top right.



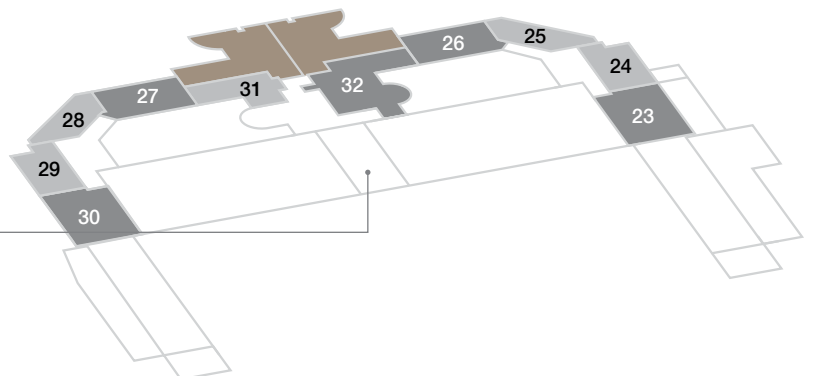
APARTMENT LOCATOR

LEVEL D



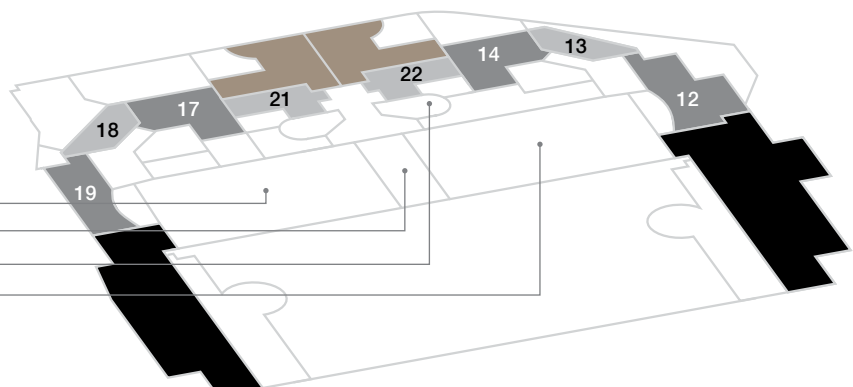
LEVEL C

LEISURE FACILITIES
SCREENING ROOM

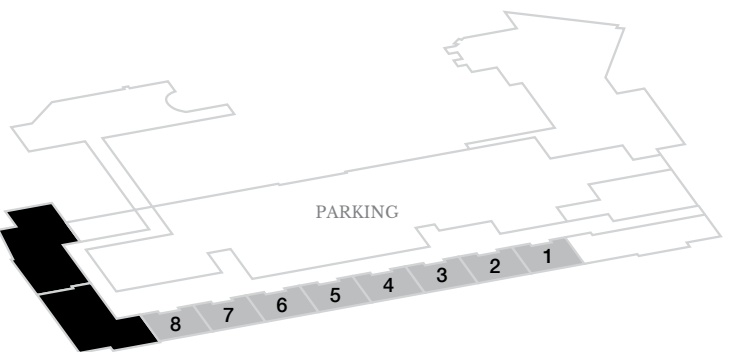


LEVEL B

LEISURE FACILITIES
KINGS ROOM – POOL & GYM
RECEPTION LOBBY
SPA TREATMENT ROOM
QUEENS ROOM



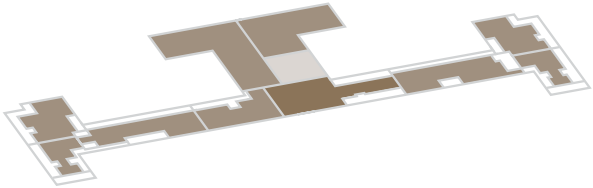
LEVEL A



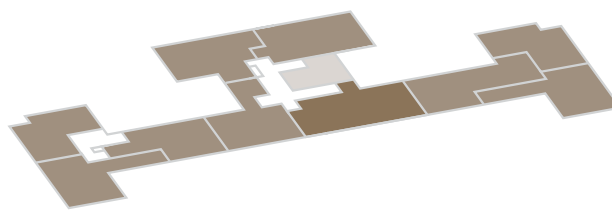
LEVEL Z



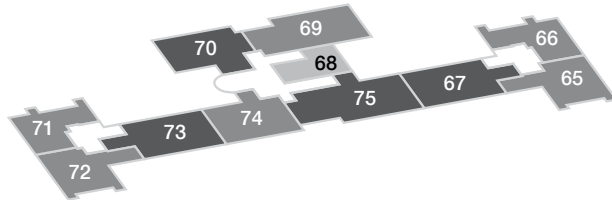
LEVEL I



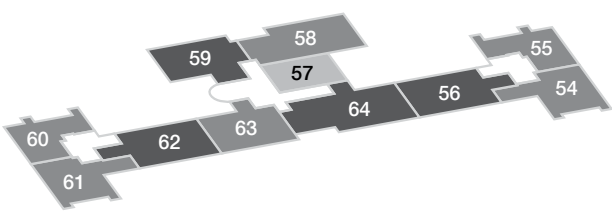
LEVEL H



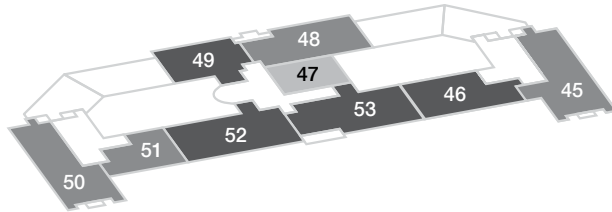
LEVEL G



LEVEL F

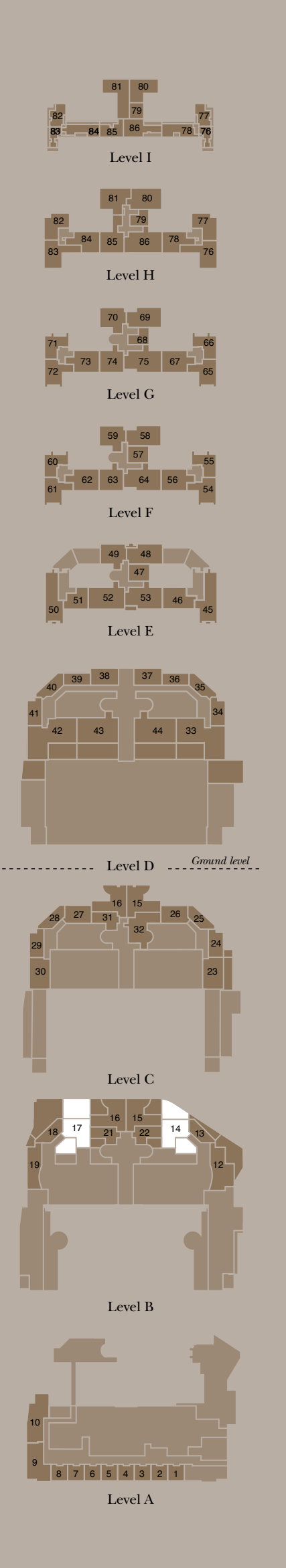


LEVEL E

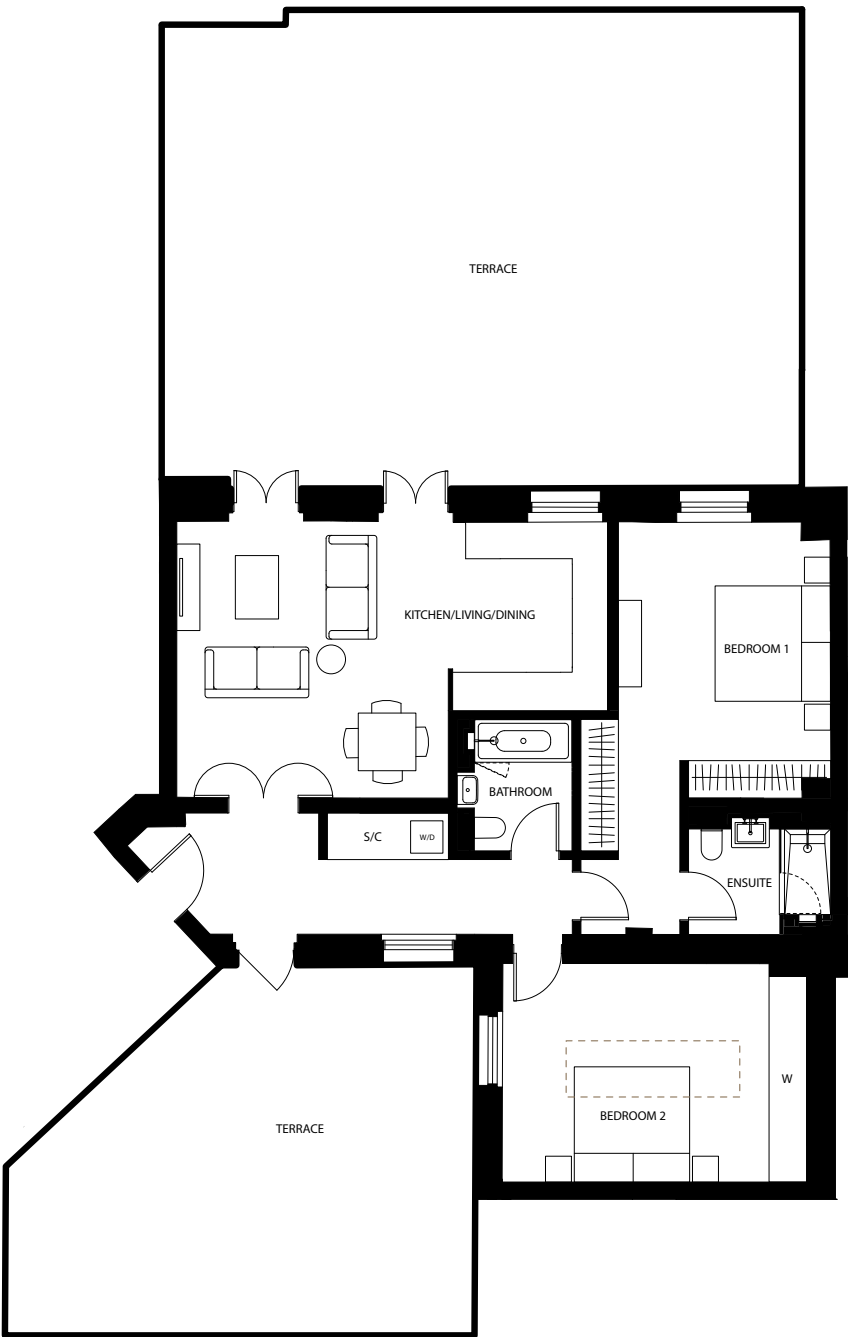


KEY

- | | | | |
|---------------------|---------------------|------------------|------------------|
| 1 BEDROOM APARTMENT | 3 BEDROOM APARTMENT | 1 BEDROOM DUPLEX | 4 BEDROOM DUPLEX |
| 2 BEDROOM APARTMENT | FUTURE RELEASE | 3 BEDROOM DUPLEX | |



PLOT NUMBERS 14* & 17



Level B

Kitchen/Living/Dining	7.50m x 4.80m	24'7" x 15'9"
Bedroom 1	7.10m x 4.30m	23'4" x 14'1"
Bedroom 2	5.20m x 3.70m	17'1" x 12'2"

- - COLUMN
- C

- CUPBOARD
- S/C

- SERVICE CUPBOARD
- W

- OPTIONAL WARDROBE
UPGRADE
- W/D

- WASHER/DRYER
- SKEILING
- ROOF LIGHT

*Plot 14 is handed and the terrace differs.
To increase legibility these plans have been scaled differently depending on bedroom type.